

Change & Changeless



Questions and Research

1. What is astrology?
Astrology is an ancient art of divination and prediction that seeks to uncover patterns and meanings in the universe by observing and interpreting the movements and positions of celestial bodies. Constellations, planets, stars, and other celestial bodies are viewed as forces that impact human existence, and astrologers interpret their positions and relationships in the sky to predict and interpret human destiny. The roots of astrology can be traced back to ancient Babylon and Egypt, but modern astrology is mainly based on the traditions of Western and yin-yang astrology.

2. Is astrology a language? What does astrology communicate?
Astrology is a symbolic language with a unique set of symbols called astrological symbols. These symbols represent celestial bodies, such as planets in the solar system, and are used to interpret relevant objects. Astrological symbols are among the world's most recognizable symbols and are also known as symbols of the gods in the sky, used to express the relationship between humans and the stars in the sky conveniently. They represent the interweaving of spiritual wisdom and physical or outward science, much like how artists use images, sounds, words, and shapes to convey meaningful patterns that are difficult to understand or communicate in reality. Astrological symbols not only represent the energy of the soul but also express the transcendent qualities of the soul. They are prototype symbols closer to the universe, transcending time, space, and culture and penetrating deep into the human heart. These symbolic representations, combined with archaic language, contain greater wisdom and more profound life principles. They can enable people to generate awareness and insight at the spiritual level and open up a dialogue with the soul.

3. What astrology means to people?
Astrology is a tool that helps people understand themselves and the world. By studying the movements of celestial bodies and their relationship with human life, astrology provides information about personality, emotions, and the future. Understanding one's birth sign and planetary positions can help people solve inner problems and plan for future careers and potential challenges. Although some people consider astrology to be superstitious, for many others, it is a valuable tool that can help them achieve better lives and accomplishments.

"Astrology is a language. If you understand this language, the sky speaks to you."

Dane Rudhyar, A Handbook for the Humanistic Astrologer



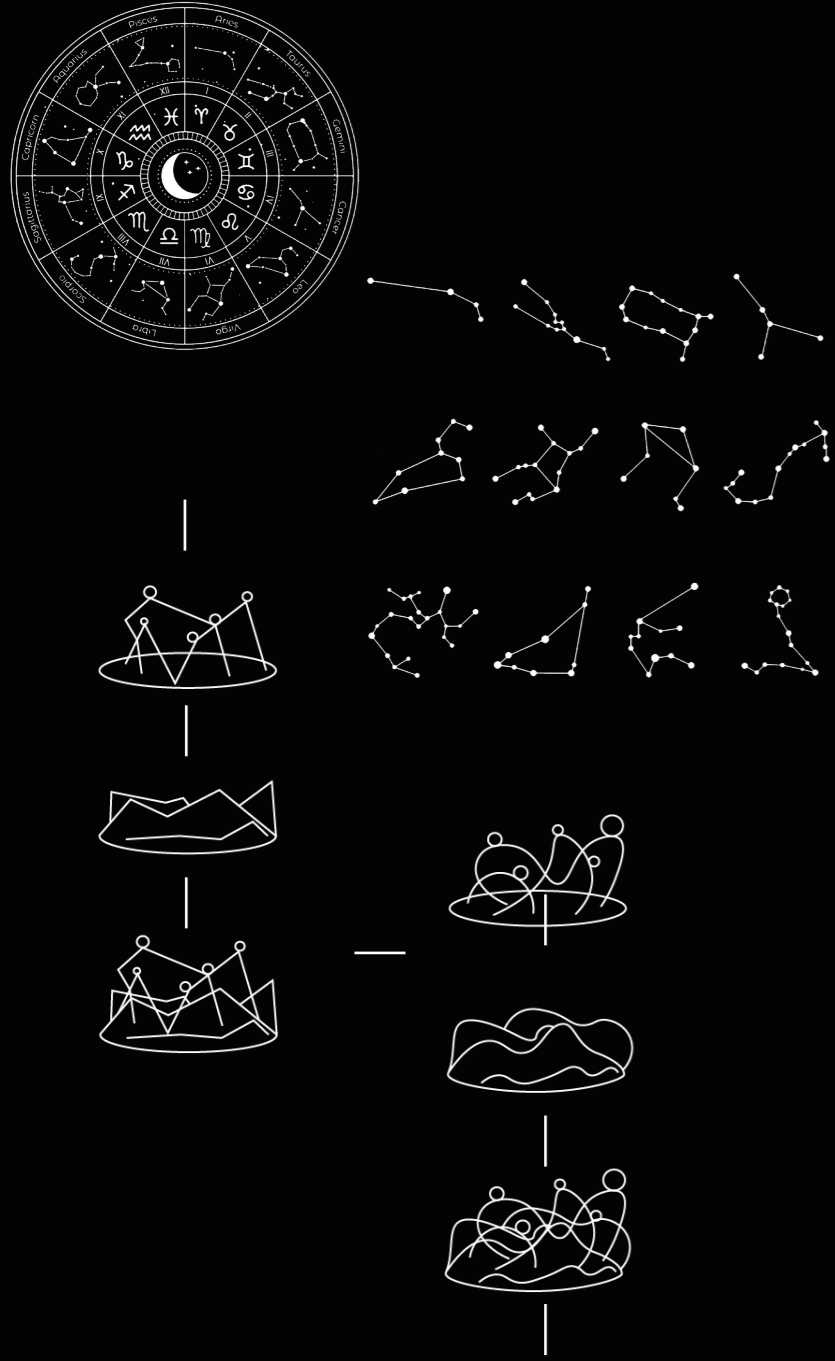
Design Proposal

The inspiration for this project came from my interest in astrology. I have a lot of anxiety about the future because everything is constantly changing, and I am unsure of my future path, while at the same time, I am haunted by my past experiences. Astrology has been an enlightening help to me in these confusions and anxieties—the only constant changes, just as the astrolabe turns with time. I see astrology as a language that bridges the past and the future that helps people to understand themselves better and develop their wisdom.

My design is inspired by the symbols on the astrolabe, which represent the different stars and their meanings in different positions. I have deconstructed these symbols from flat lines to form a 3D model installation that allows people to visualise the movement and changes of the stars. In this installation, one can observe glowing moving spheres representing the many different stars in the universe, and their trajectories help one better understand the universe's workings.

The device can exist in the natural and virtual worlds, which means it can bridge people and the universe. Through this device, people can better understand their inner world and resonate with the universe. The soft, glowing spheres can also bring healing and peace, which is especially important for modern people, as we often face all kinds of stress and anxiety and need some way to reduce it and find peace.

Design pathway



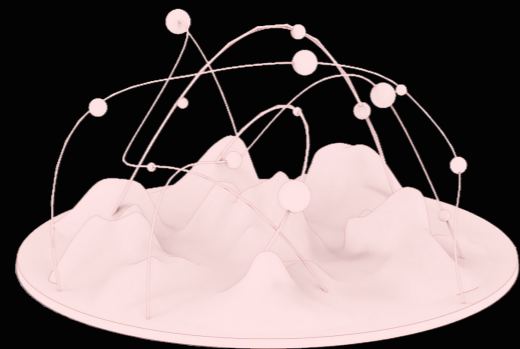
Model Rendering



Test Model



Model Detail



Section

